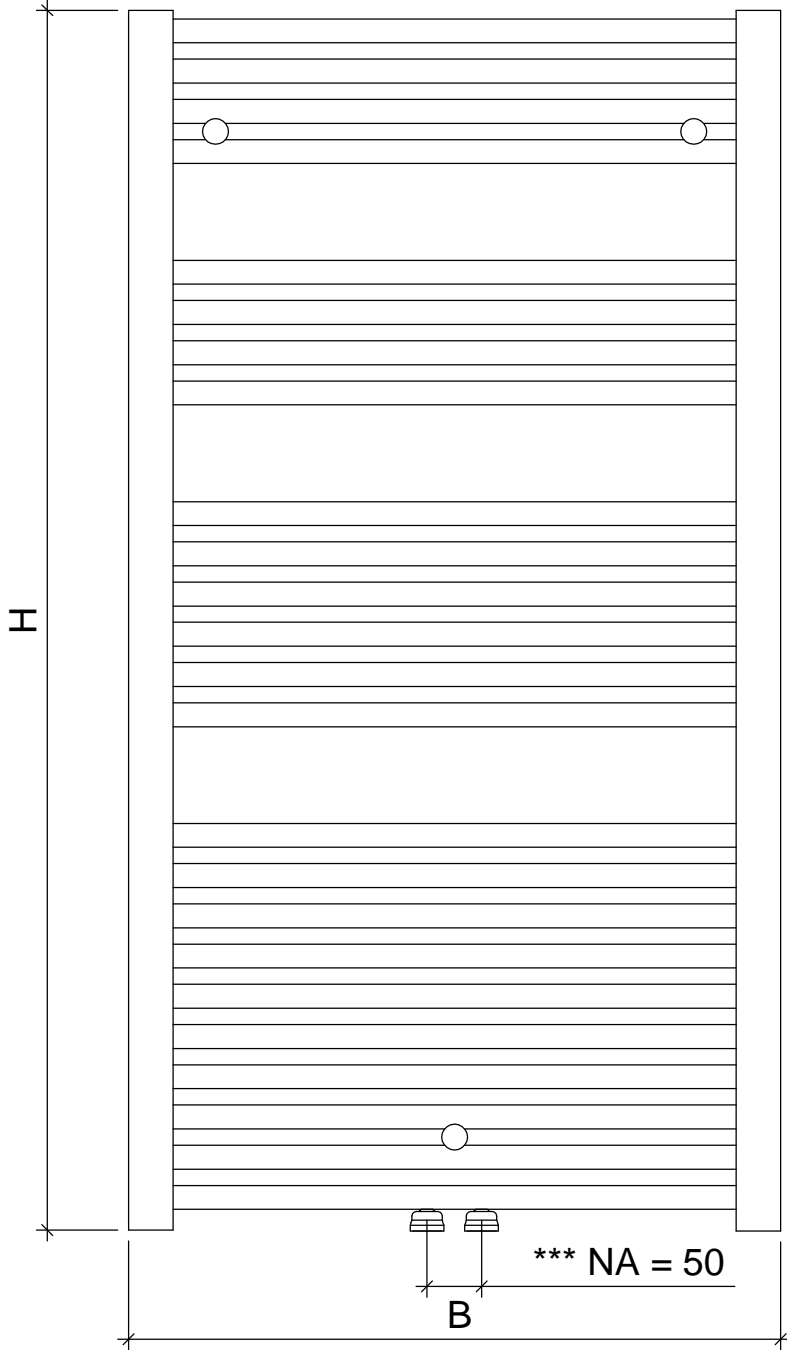
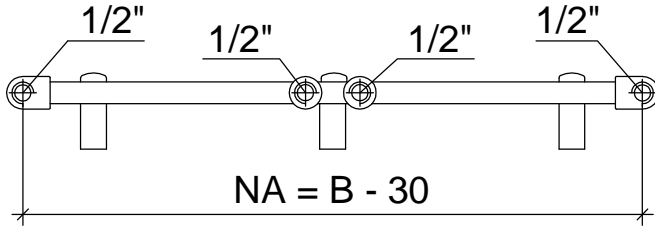


# Luna



Wandabstand bis Mitte Gewinde  $\frac{1}{2}$ " : 65 - 83 mm variabel  
Nabenabstand: Breite -30 mm

Rohraufteilung: Höhe 825 [4 / 4 / 10]; 1121 [4 / 4 / 6 / 10]; 1454 [4 / 4 / 6 / 11]; 1750 [4 / 6 / 6 / 11 / 12]

